

PACKGLUED VI-GS

Automatic high speed folder gluer,
linear gluing 4 and 6 corners



Introduction

GS Automatic high speed folder gluer models are equipped with advanced state of the art technologies for fast job changeover, especially focussed on multi-type work capabilities with medium-long to shorter run lengths in mind.

Motorized carriers, full and sectional job/memory recall, new universal multi-function section with integrated bump & turn allows to turn cartons 90° and its alignment. Pre-breakers device by outer belts on both sides. New drives technologies, extra length crash lock bottom section. Extra folding & closing section with collapsible central carrier, able to produce complex carton structures, straight line, lock bottom, 4 & 6 corner cartons and more. GS series machine has emerged with high automation and fully functional, which help box manufacturer to make the best use of paper material and improve efficiency of box producing.

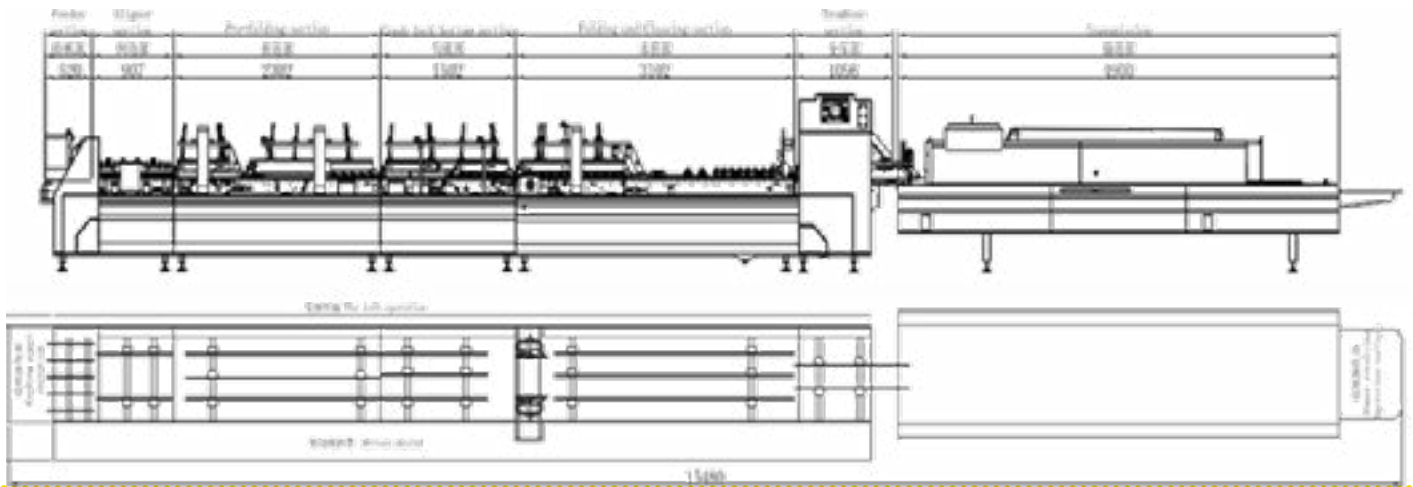
We persist on innovative and High-performance. It help us to provide the most competitive gluing and folding equipment for all the customers!

Function

- 1.-Apply to corrugated cardboard paper box.
- 2.-Strong stainless steel frame, insure machine running stably with high speed.
- 3.-Automatic fault diagnosis alarm function, Wireless remote control for easy user operation.
- 4.-Machine with PLC control, photocell touch screen for adjusting machine
- 5.-Low-voltage electrical appliances, button switches, transmission parts, timing belts, press belts, bearings, servo motors, inverters, pneumatic components, etc. are all imported products that meet European and American advanced national safety standards.
- 6.-Side touch screen displays the machine's speed, output, fault alarm, touch screen controls the machine's start/stop, paper feeding clutch, box receiving part's start/stop, parameter setting and other operations.

TECHNICAL PARAMETERS

No.	Parameters		650	800	1100
1	Paper material	n/a	Cardboard 210-800gsm A/B/E Flute		
2	Max.Speed	m/min	400		
3	Max.thickness of folded box	mm	12 1300 x 1010		
4	Way of folding	n/a	Fold 1 and fold 3 are 180° and 165°		
5	Power supply	n/a	3P 380V 50HZ		
6	Blank width	mm	650	800	1100
7	Length x Width x Height	m	13 x 1.6 x 1.2	15 x 1.6 x 1.36	15 x 1.6 x 1.66
8	Net Weight	Ton	5.5	6.5	7.5
9	Total power	kw	28.6	31.18	



- 1.The feed part is driven by variable frequency motor and synchronizes with the main engine
- 2.Feeder section equipped with three pieces feeding knife, adjust the asymmetrical lengths as per the box sample.
- 3.Rail width can be horizontally adjusted and set by seven pieces 30mm thickened feeding belt and 10mm metal board.

- 4.Operators can operate feeder switch in any regional.
- 5.Embossing drive wheel guide the feeding section belt, side feed gates in the right and left are adjustable according to the products.
- 6.Vibration device coordinate with motor which helps machine consecutive and automatic feeding quick and simply. Feeder section can stack 400MM height paper board.



2. Aligner specification

The paper board sent from feeder section will be corrected by aligner section to ensure transmission accurately.

Pressing drive pressure can be adjusted up and down to accommodate different paper board thickness.



3.Pre-folding section

Special first folding line pre-fold 180°. third line 165° , which perfectly meeting the requirements of automatic packaging industry.



4.Crash lock bottom section

Complete set of crash lock bottom device makes the lock bottom Part perfectly. Sectional-type upper Belt board with special design



5.Lower gluing tank

- 1.Lower gluing tank is large volume.
- 2.Easy to remove and clean
- 3.Electronic upper gluing system by guns.



6.Folding and closing

1. Collapsible central carrier by pneumatic system, saving time for set-up and allows to run small boxes.
2. Folding and closing section transmit from right and left side ,the belt speed can be adjusted separately and correct the way of box running to ensure straightly delivery.



7.Trombone section

- 1.Up and down belt can be adjusted separately.
- 2.Equipped with photo electronic counting device and kicking paper device, which can press the paper after accounting and make it easy to pack . Also equipped with feeding paper inspection device.



8.Transmission

Equipped with special additional sponge belt for the press of boxes valley part. Upper section moves back and forward, allowing for different box length.



9.Box Squaring

Full press section continuously and automatically box collection mechanism that ensures a neat transfer to the press section, guaranteeing a well aligned flow.



10.4 and 6-corner device

Motorized and untimed electronic back folding system with intelligent servo motor technology



Cold Glue System

With 4 channels-3 guns cold glue system convenient in the production of 4/6 corner box and various special-shaped box, gluing quickly and accurately size



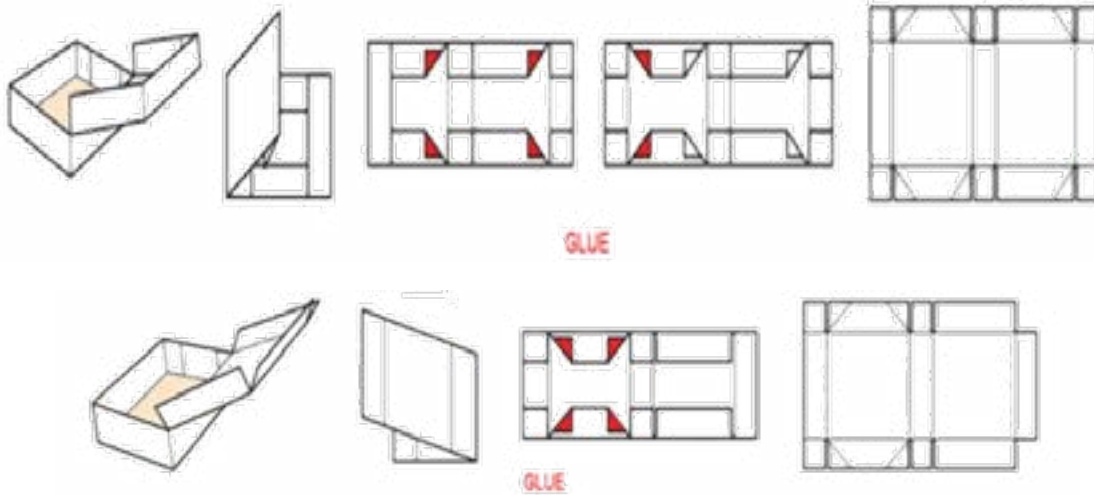
八枪泵

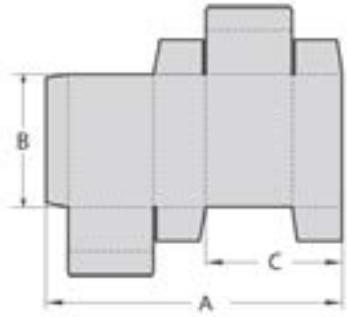
型号	规格	1800
适用粘度范围	To adhesives maximum viscosity	5000 mPa.s
物料传输效率	Each two-way transport efficiency	200 cm ²
压力	Pressure type	0:1
气源输入要求	Gas source input requirements	0-8 bar
重量	Weight	30kg
尺寸	Size	104 * 201 * 180

OPTIONAL Upgrading to
8 controller 8 guns glue system



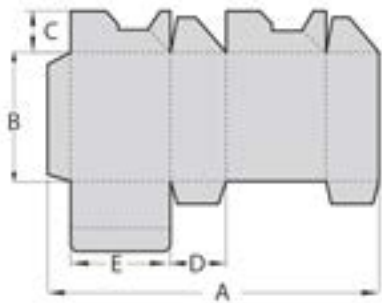
Optional: Stacker
Price: + USD 6,500





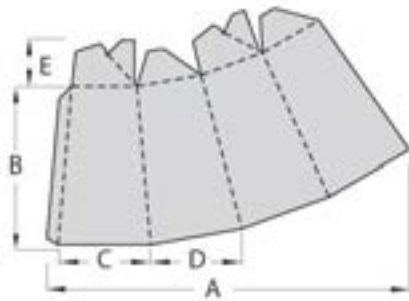
Straight-line box

No.	650	800	1100
A	75 - 650	75 - 800	75 - 1100
B	60 - 650	60 - 800	60 - 1100



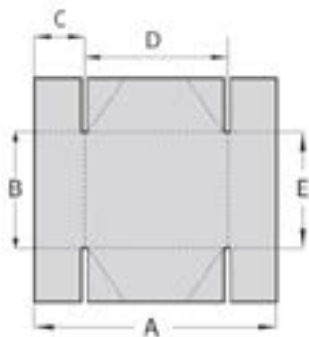
Crash lock bottom box

No.	650	800	1100
A	160 - 650	160 - 800	160 - 1100
B	90 - 900		
C(min)	20		
D(min)	30		
E(min)	40		



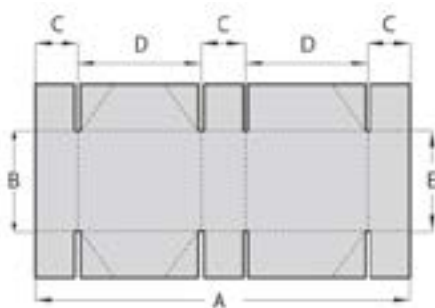
Tapered box

No.	650	800	1100
A	160 - 650	160 - 800	160 - 1100
B	90 - 650	90 - 800	90 - 1100
C(min)	40		
D(min)	35		
E(min)	20		



4 corners box

No.	650	800	1100
A	160 - 500	160 - 800	160 - 1100
B	120 - 650	120 - 800	120 - 1100
C(min)	20 - 200		
D(min)	90		
E(min)	80		



4 corners box

No.	650	800	1100
A	250 - 650	250 - 800	250 - 1100
B	120 - 800		
C(min)	20 - 200		
D(min)	90		
E(min)	80		

STRAIGHT-LINE TYPE



CRASH LOCK BOTTOM TYPE



FOUR CORNERS TYPE



SIX CORNERS TYPE





Main Board

- Mail Wall plate 16 mm which is International standard steelplate processing cold and hot



Board for conveyor

- The bending part 8 mm which is International standard steel plate processing cold and hot treatment.



Main Motor

- SIEMENS-Germany



Conveying motor

- Qiobang



Converter

- German-Rexroth



PLC controller

- Taiwan-FATEK



Touch Display

- Taiwan-weinview



Circuit Breaker

- France-Schneider



Contactor

- France-Schneider



Intermediate relay

- France-Schneider



Button

- France-Schneider



Switch power supply

- Changxin



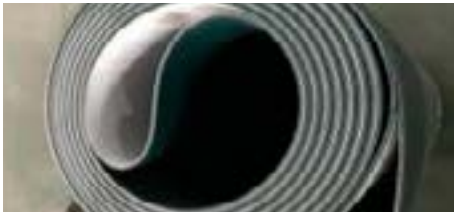
Photo electricity
· KEYENCE



Feeding Belt
· Japan-NITTA



Base belt
· Germany-Siegling



Conveying belt
· Switzerland-Habasit



Bearing
· NSK-Japan



Transmission bearing
· NSK-Japan



Chrome bar
· Through quenching-tempering



Mound layer, roller
· Special section bar, hot processed



Press Switch+ Remote controller
· Telecrane

Configuration	Standard	Optional
Feeder with servo-motor and belts with suction Lateral registration	•	
Pre-folded section	•	
Automatic lock bottom	•	
Lower gluing unit on the left	•	
Lower gluing unit on the right		•
Top gluing system KQ Cold Glue 3 guns high pressure	•	
Grinder with dust extraction		•
4/6 corners	•	
Folded and closed section	•	
Motorized Trombone section	•	
New trombone w/ejector (all included)		•
Pressure roller device		•
Pneumatic pressing section	•	
Lock bottom squaring device at trombone	•	
Pocket folder device	•	
Device for small boxes	•	
Z-fold attachment		•
Display LED		•
Voltage Transformer		•
Air compressor	•	
Tape applicator		•
Plasma system 1 pistol		•
Plasma system 2 pistols		•
Plasma System 3 Pistols		•
G-Pack		•